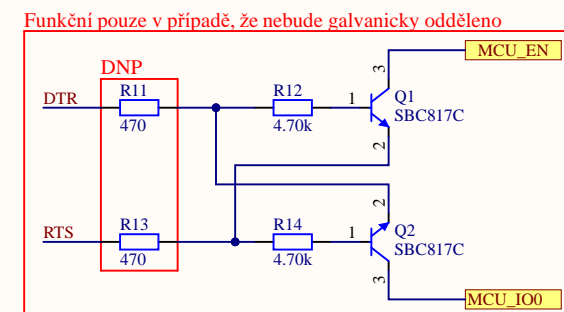
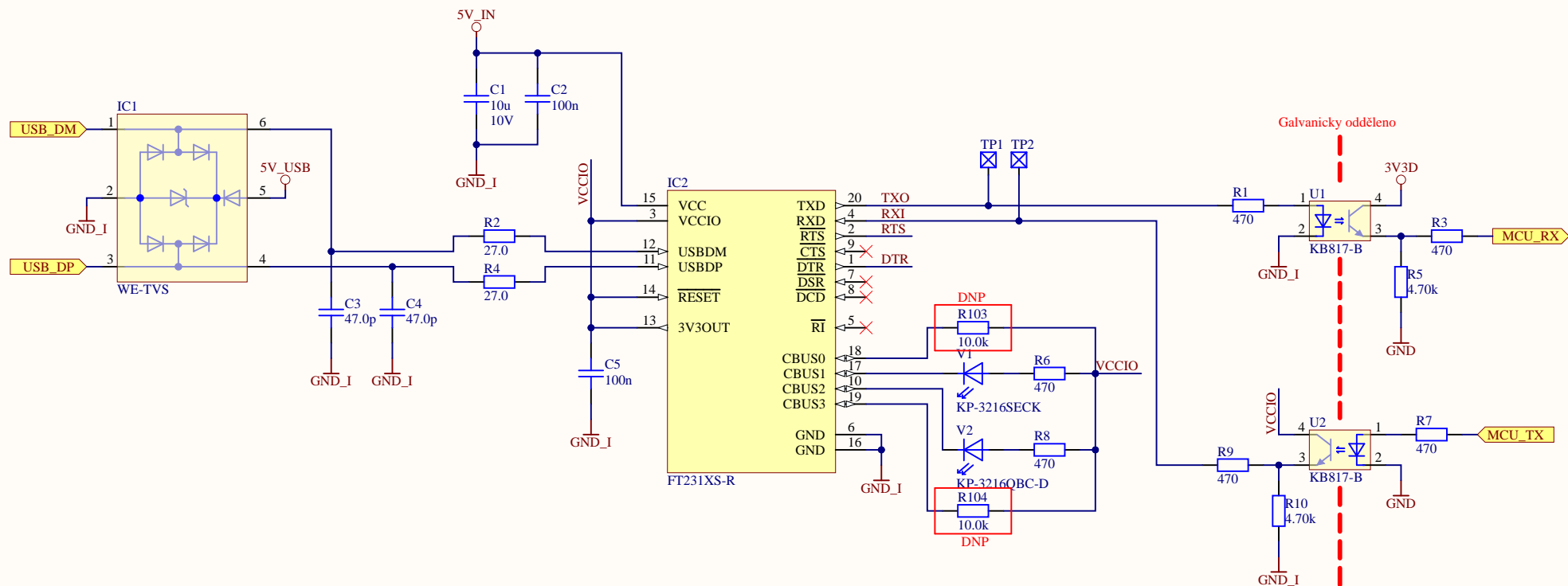


Cannot open file
C:\Users\lcalt\DESKTOP-GNU1GO8\OneDrive\Plocha\DP_Calta\HW\Altium\Caltal_DP_merici_karta\Templates\FEL.png. File does not exist.

Size: A4	Date: 20.05.2022	Title: Caltal_DP_merici_karta	
Author: Lukas Calta	Subtitle: [SUBTITLE]		Variant: [No Variations]
Checked by: [checked by]	Nr.: [number]		Revision: A1
Approved by: [approved by]	Type: [MPM]		Sheet 1 of 21
		File: TOP.SchDoc	



Cannot open file
C:\Users\lcalt.DESKTOP-GNU1GO8\OneDrive\Plocha\DP_Calta\HW\Altium\Caltal_DP_merici_karta\Templates\FEL.png. File does not exist.

Size: A4	Date: 20.05.2022	Title: Caltal_DP_merici_karta		
Author: Lukas Calta		Subtitle: [SUBTITLE]	Variant: [No Variations]	
Checked by: [checked by]		Nr.: [number]	Revision: A1	
Approved by: [approved by]		Type: [MPM]	Sheet 2 of 21	
		File: USB UART.SchDoc		

Note: Data in fields enter via project/document parameters.

A

A

B

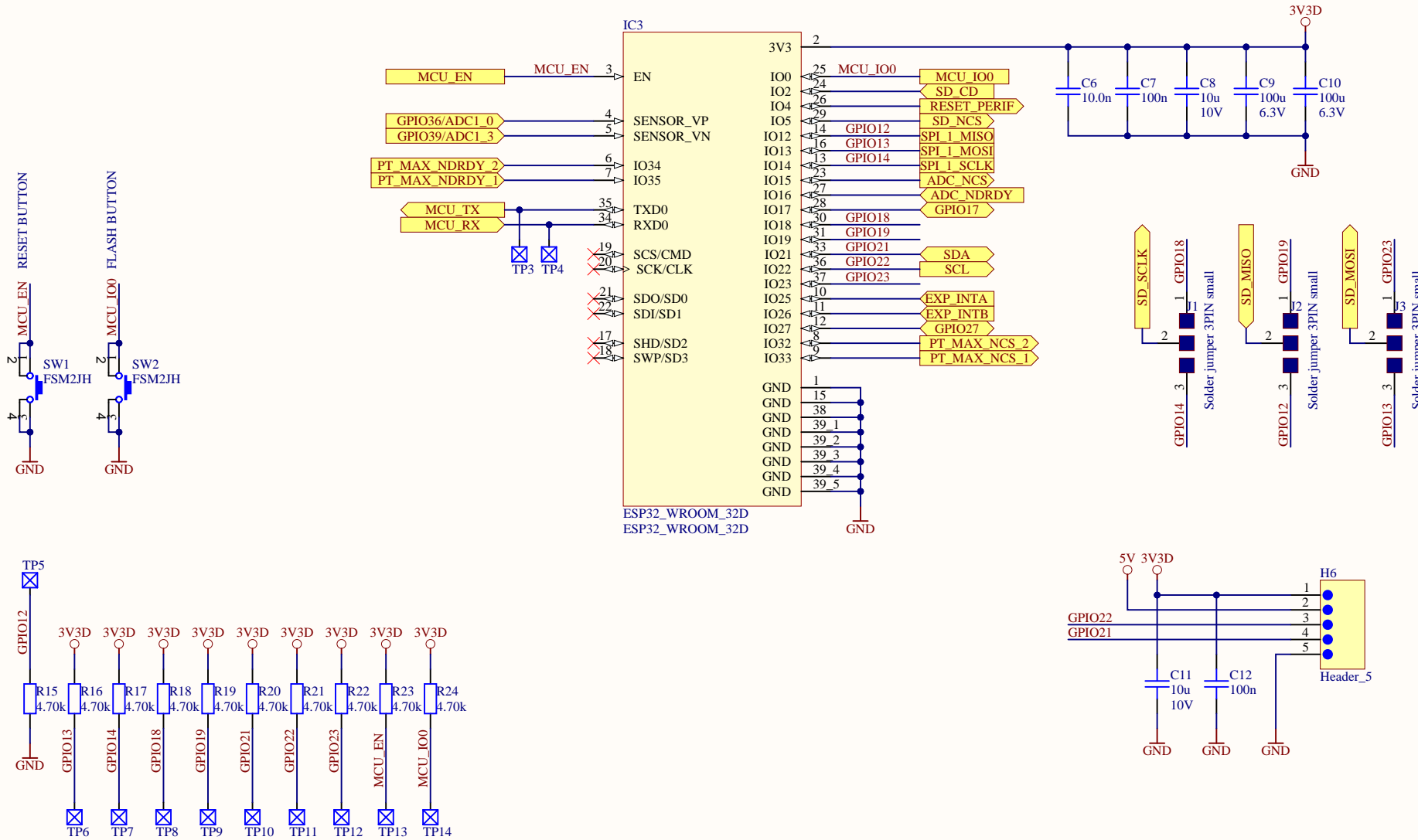
B

C

C

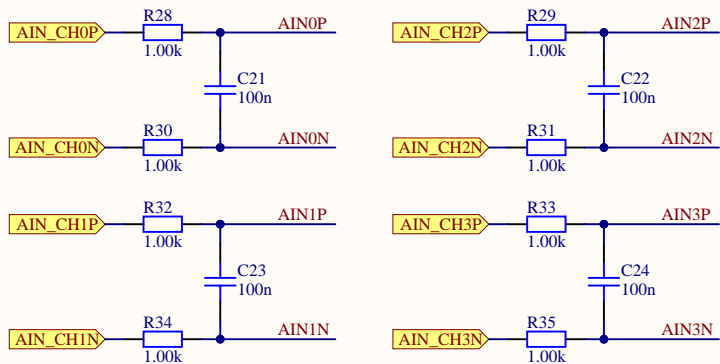
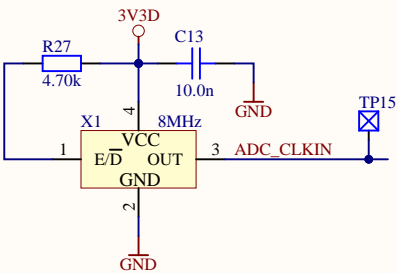
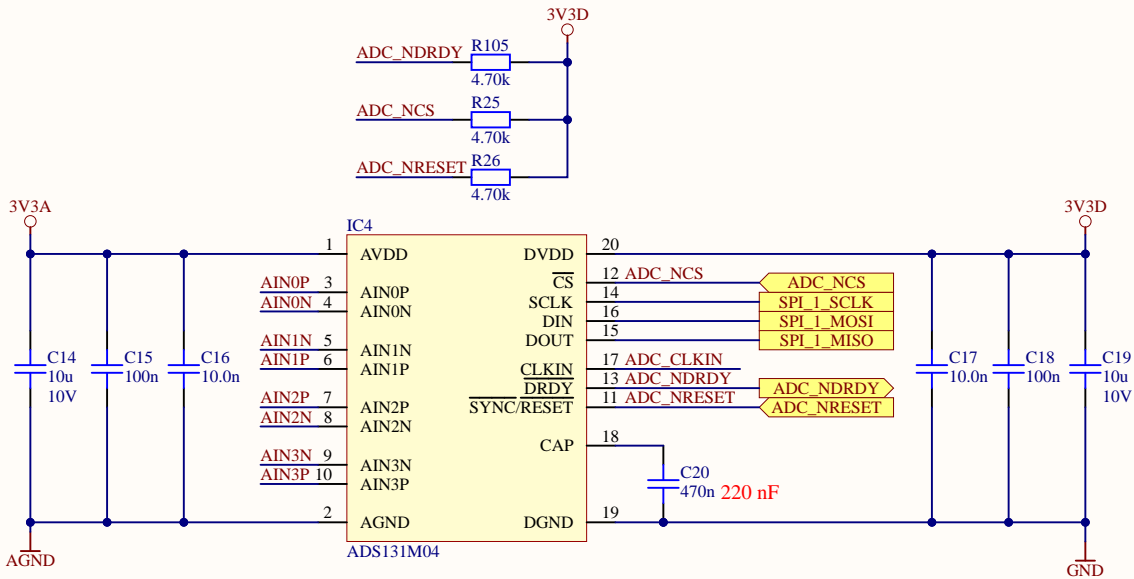
D

D



Cannot open file
C:\Users\lcalt\DESKTOP-GNU1GO8\OneD
rive\Plocha\DP_Calta\HW\Altium\Caltal_D
P_merici_karta\Templates\FEL.png. File
does not exist.

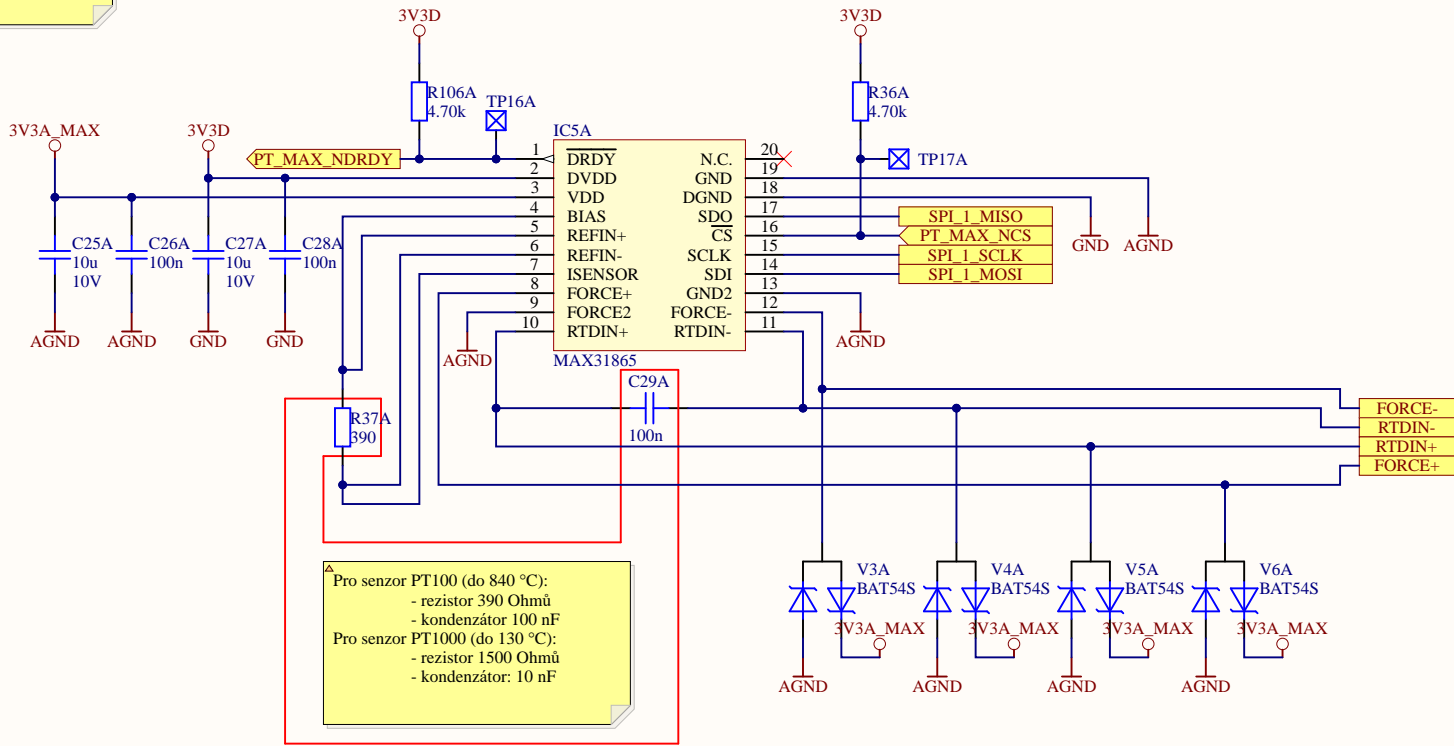
Size: A4	Date: 20.05.2022	Title: Caltal_DP_merici_karta	
Author: Lukas Calta	Subtitle: [SUBTITLE]		Variant: [No Variations]
Checked by: [checked by]	Nr.: [number]		Revision: A1
Approved by: [approved by]	Type: [MPM]		Sheet 3 of 21
		File: MCU.SchDoc	



Cannot open file
C:\Users\lcalt\DESKTOP-GNU1GO8\OneDrive\Plocha\DP_Calta\HW\Altium\Caltal_DP_merici_karta\Templates\FEL.png. File does not exist.

Size: A4	Date: 20.05.2022	Title: Caltal_DP_merici_karta	
Author: Lukas Calta	Subtitle: [SUBTITLE]		Variant: [No Variations]
Checked by: [checked by]	Nr.: [number]		Revision: A1
Approved by: [approved by]	Type: [MPM]		Sheet 4 of 21
		File: ADC.SchDoc	

Určení hodnoty referenčního odporu:
 $RTD = (ADC_code \times R_ref) / 2^{15}$
MAX31865 - rozsah R_ref : 350 - 10k Ohmu
PT100:
Nelze moc snížit rozsah pro zvýšení přesnosti, proto navrhuji pro tento senzor $R_ref = 390$ Ohmů.
PT1000:
Pro 130 °C (tzn. menší rozsah, větší přesnost) je hodnota $RTD = 1498,32$ Ohmu, proto $R_ref = 1,5$ kOhmu, tolerance 0,1 %

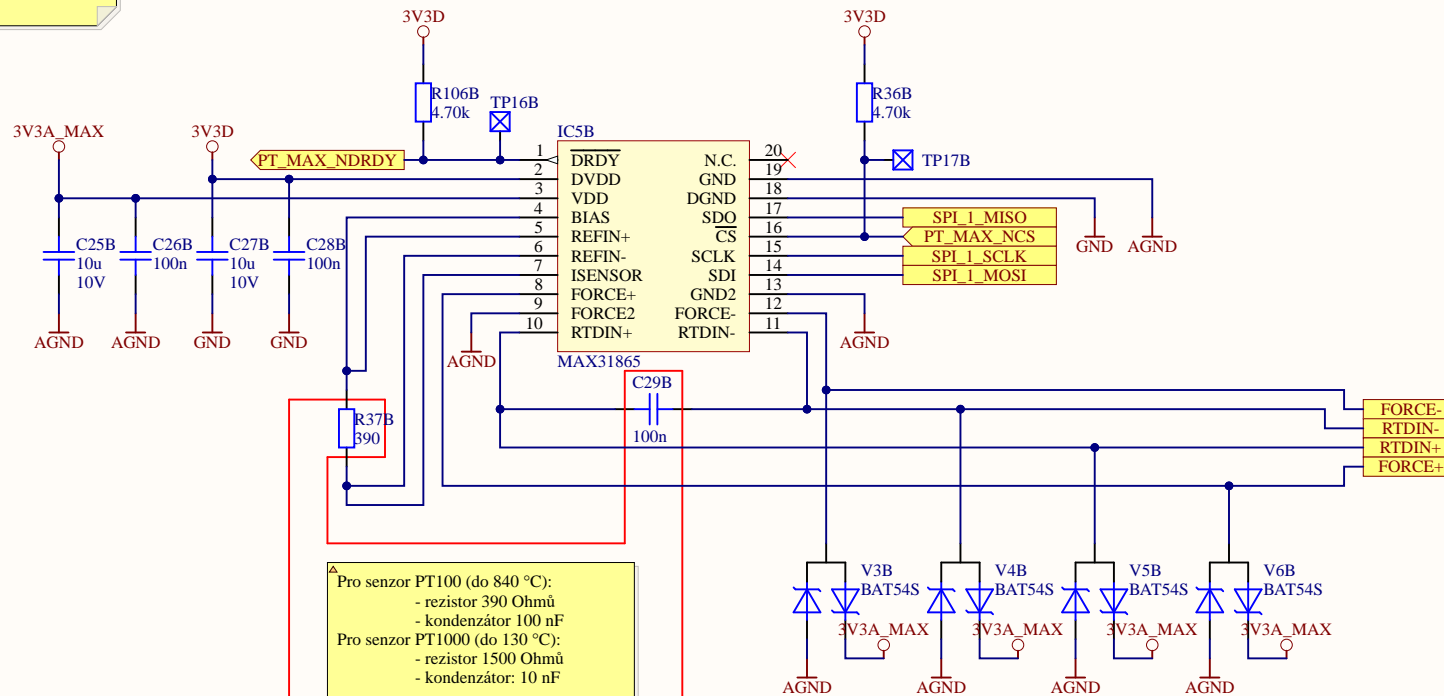


Pro senzor PT100 (do 840 °C):
- rezistor 390 Ohmů
- kondenzátor 100 nF
Pro senzor PT1000 (do 130 °C):
- rezistor 1500 Ohmů
- kondenzátor: 10 nF

Cannot open file
C:\Users\lcalt\DESKTOP-GNU1GO8\OneDrive\Plocha\DP_Calta\HW\Altium\Caltal_DP_merici_karta\Templates\FEL.png. File does not exist.

Size: A4	Date: 20.05.2022	Title: Caltal_DP_merici_karta		
Author: Lukas Calta	Subtitle: [SUBTITLE]		Variant: [No Variations]	
Checked by: [checked by]	Nr.: [number]		Revision: A1	
Approved by: [approved by]	Type: [MPM]		Sheet 5.1 of 21	
	File: PT100_converter.SchDoc			

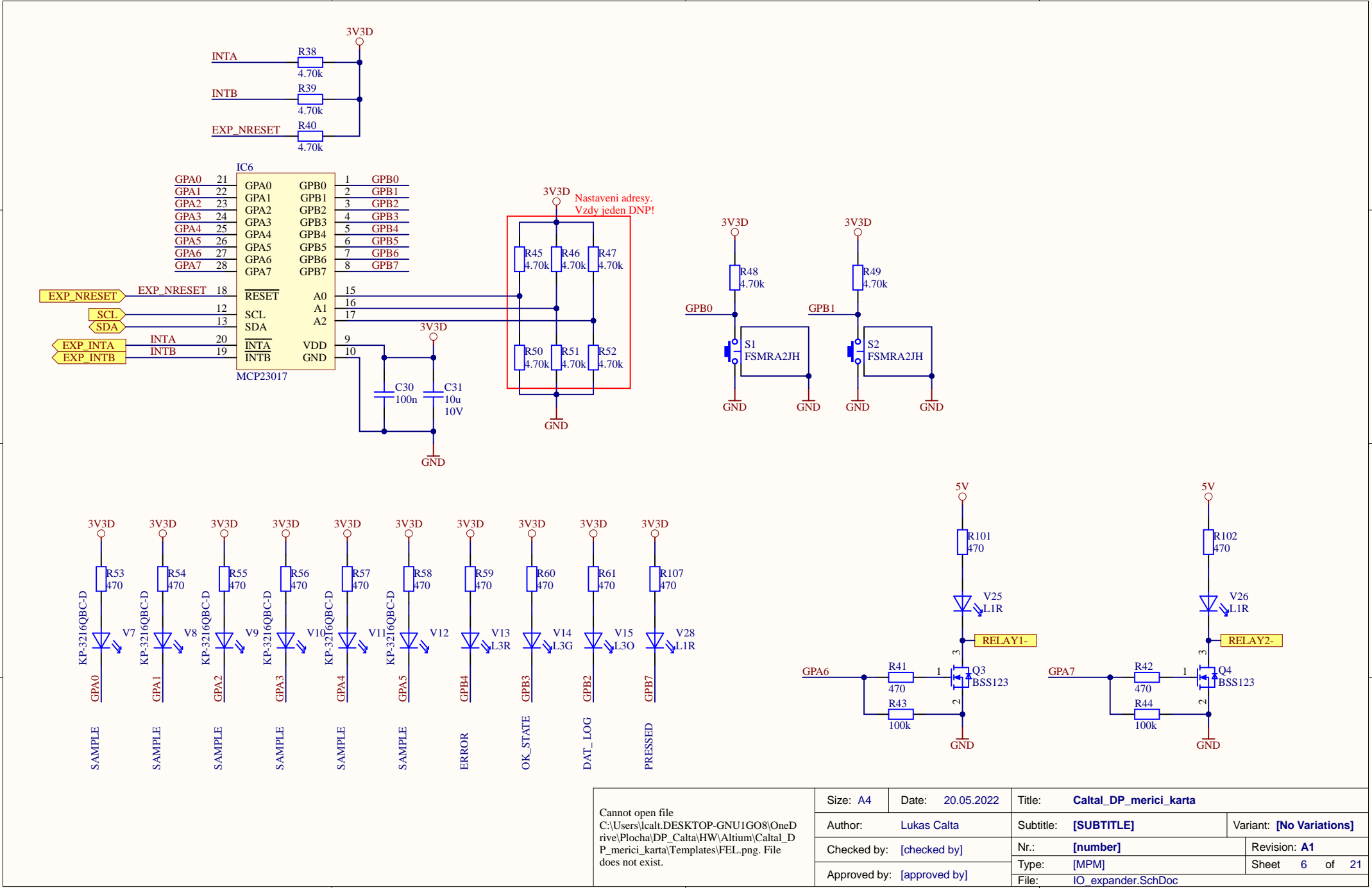
▲ Uřícení hodnoty referenčního odporu:
 $RTD = (ADC_code \times R_ref) / 2^{15}$
 MAX31865 - rozsah R_ref : 350 - 10k Ohmu
 PT100:
 Nelze moc snížit rozsah pro zvýšení přesnosti, proto
 navrhuji pro tento senzor $R_ref = 390$ Ohmů.
 PT1000:
 Pro 130 °C (tzn. menší rozsah, větší přesnost) je hodnota
 $RTD = 1498,32$ Ohmu, proto $R_ref = 1,5$ kOhmu, tolerance
 0,1 %

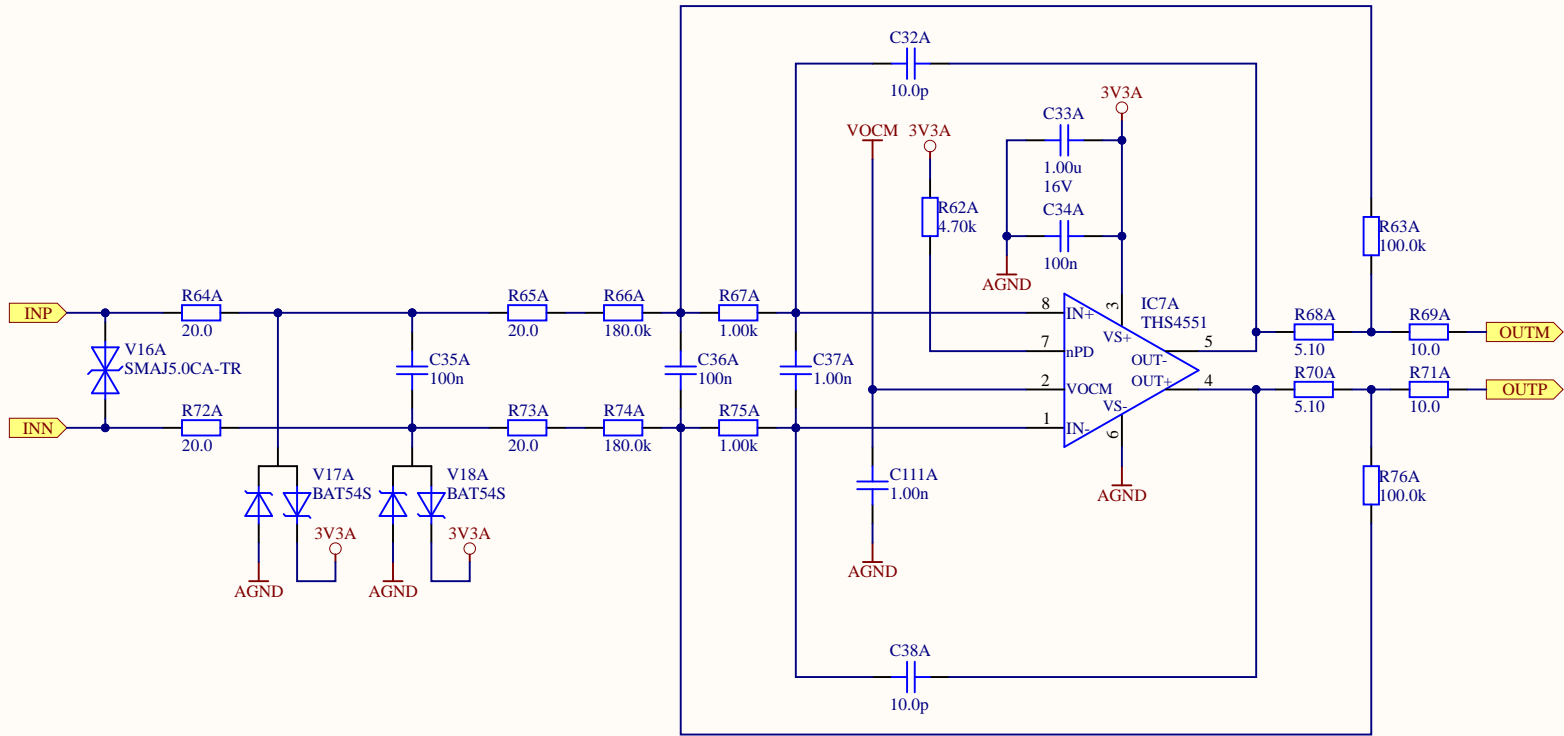


Pro senzor PT100 (do 840 °C):
- rezistor 390 Ohmů
- kondenzátor 100 nF
Pro senzor PT1000 (do 130 °C):
- rezistor 1500 Ohmů
- kondenzátor: 10 nF

Cannot open file
C:\Users\lcalt.DESKTOP-GNU1GO8\OneDrive\Plocha\DP_Calta\HW\Altium\Caltal_DP_merici_karta\Templates\FEL.png. File does not exist.

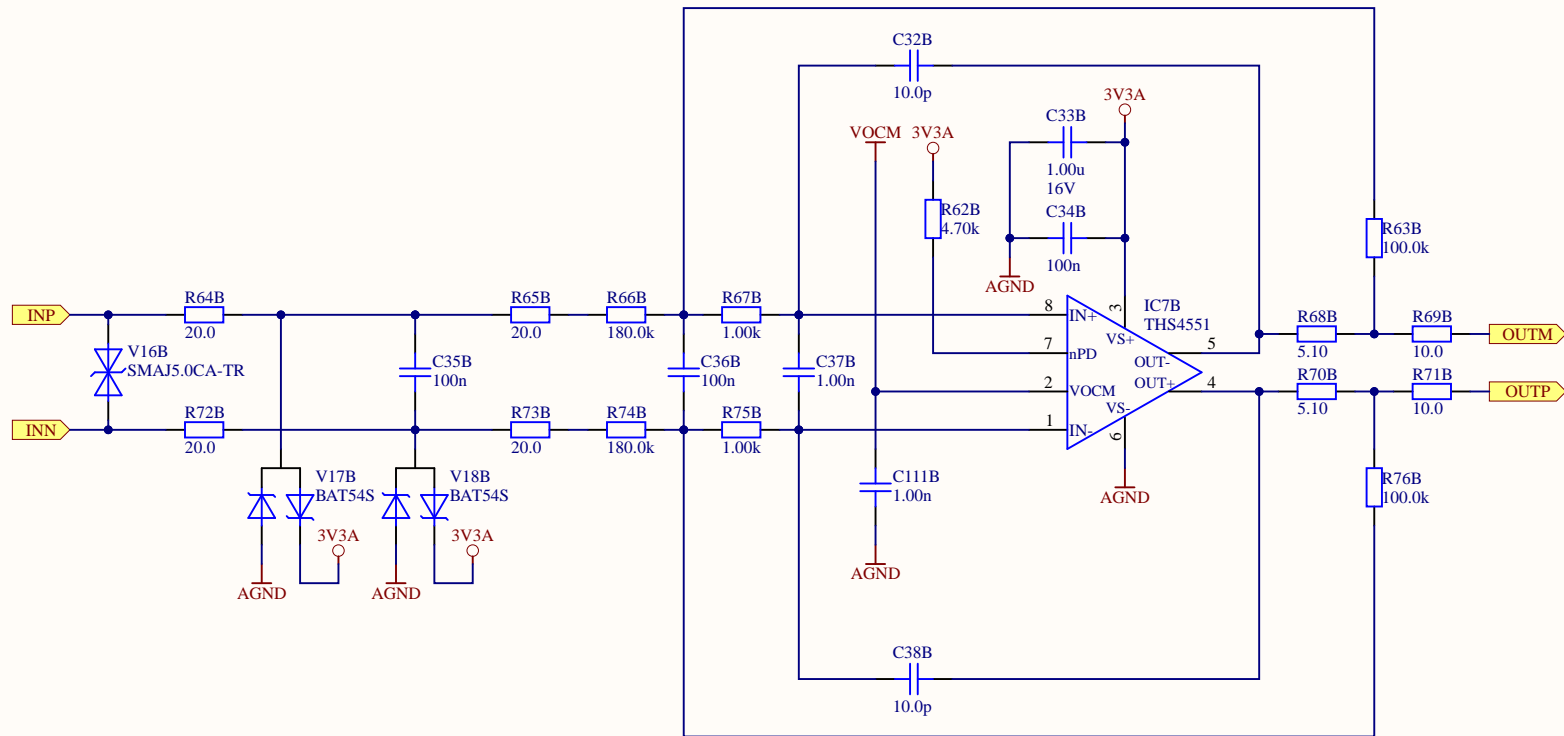
Size: A4	Date: 20.05.2022	Title: Caltal_DP_merici_karta		
Author: Lukas Calta	Subtitle: [SUBTITLE]		Variant: [No Variations]	
Checked by: [checked by]	Nr.: [number]		Revision: A1	
Approved by: [approved by]	Type: [MPM]		Sheet 5.2 of 21	
	File: PT100_converter.SchDoc			





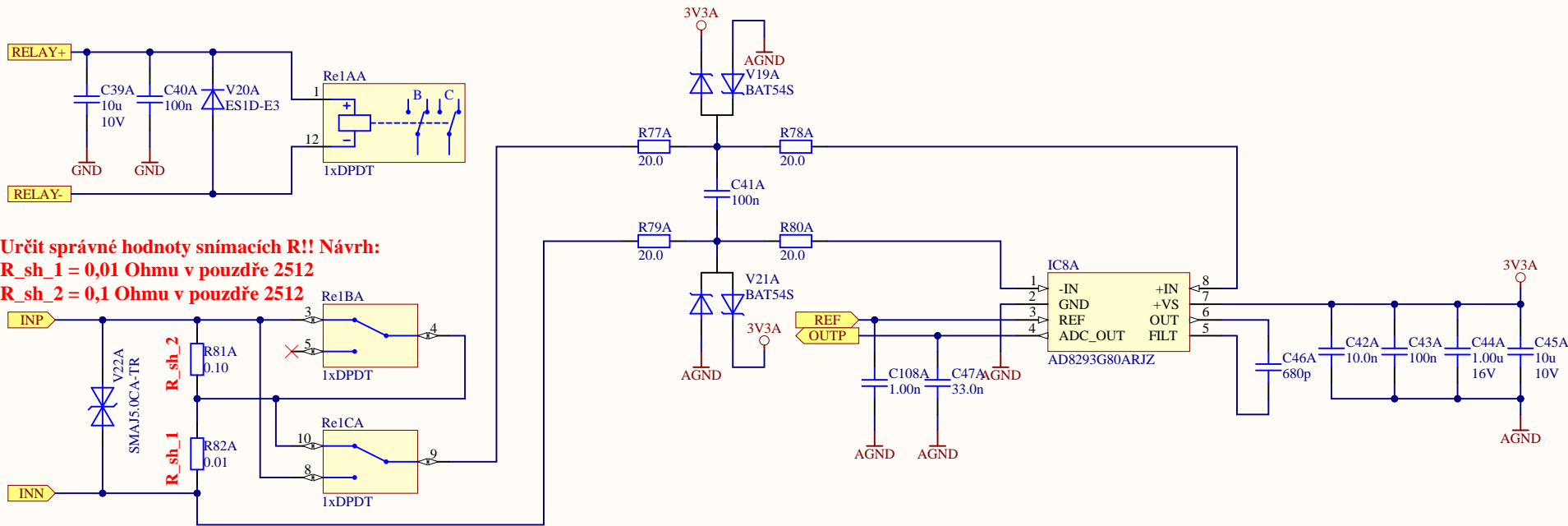
Cannot open file
C:\Users\lcalt\DESKTOP-GNU1GO8\OneD
rive\Plocha\DP_Calta\HW\Altium\Caltal_D
P_merici_karta\Templates\FEL.png. File
does not exist.

Size: A4	Date: 20.05.2022	Title: Caltal_DP_merici_karta		
Author: Lukas Calta	Subtitle: [SUBTITLE]		Variant: [No Variations]	
Checked by: [checked by]	Nr.: [number]	Revision: A1		
Approved by: [approved by]	Type: [MPM]	Sheet 7.1 of 2		
	File: Voltage_input.SchDoc			



Cannot open file
C:\Users\lcalt\DESKTOP-GNU1GO8\OneD
rive\Plocha\DP_Calta\HW\Altium\Caltal_D
P_merici_karta\Templates\FEL.png. File
does not exist.

Size: A4	Date: 20.05.2022	Title: Caltal_DP_merici_karta	
Author: Lukas Calta	Subtitle: [SUBTITLE]		Variant: [No Variations]
Checked by: [checked by]	Nr.: [number]		Revision: A1
Approved by: [approved by]	Type: [MPM]		Sheet 7.2 of 21
	File: Voltage_input.SchDoc		

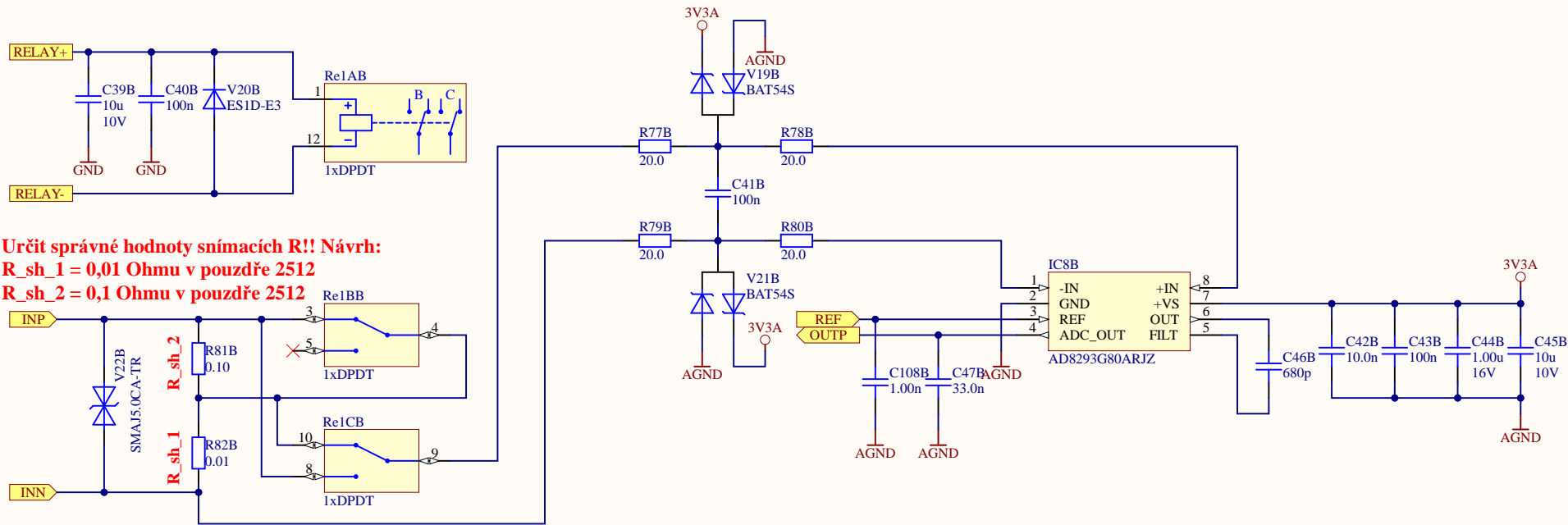


Určit správné hodnoty snímacích R!! Návrh:
R_sh_1 = 0,01 Ohmu v pouzdře 2512
R_sh_2 = 0,1 Ohmu v pouzdře 2512

Cannot open file
 C:\Users\lcalt\DESKTOP-GNU1GO8\OneDrive\Plocha\DP_Calta\HW\Altium\Caltal_DP_merici_karta\Templates\FEL.png. File does not exist.

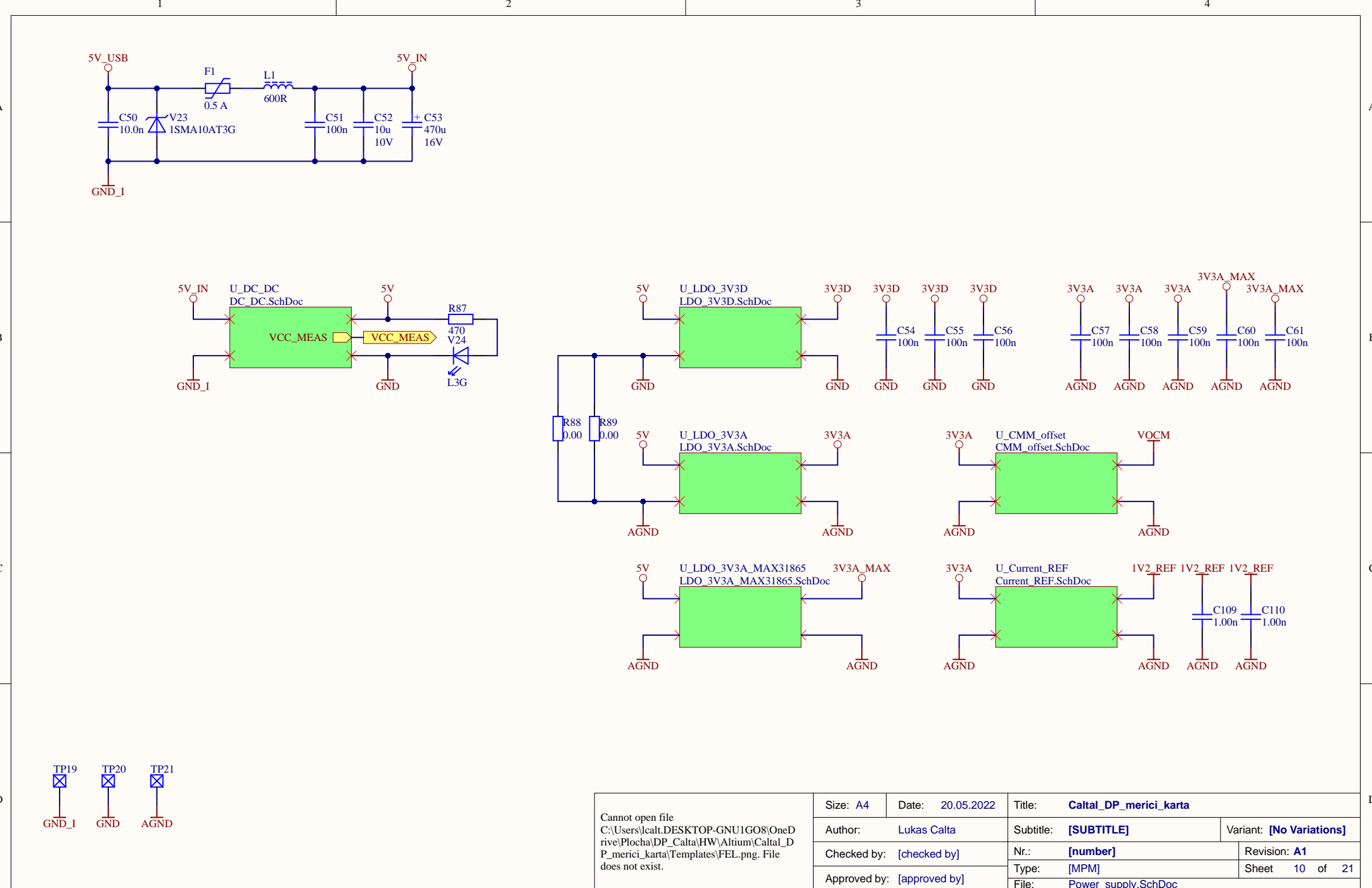
Size: A4	Date: 20.05.2022	Title: Caltal_DP_merici_karta		
Author: Lukas Calta	Subtitle: [SUBTITLE]		Variant: [No Variations]	
Checked by: [checked by]	Nr.: [number]	Revision: A1		
Approved by: [approved by]	Type: [MPM]	Sheet 8.1 of 21		
	File: Current_input.SchDoc			

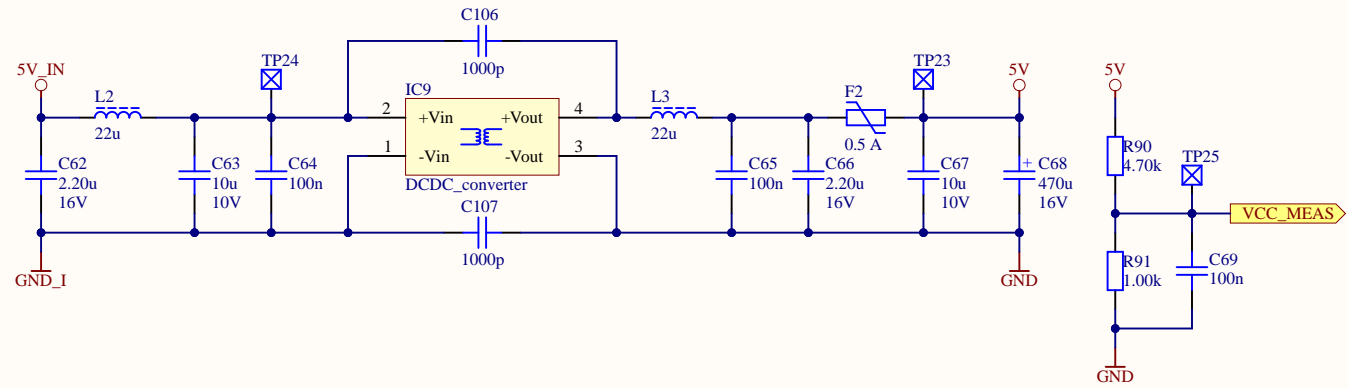
Note: Data in fields enter via project/document parameters.
 4



Cannot open file
C:\Users\lcalt\DESKTOP-GNU1GO8\OneD
rive\Plocha\DP_Calta\HW\Altium\Caltal_D
P_merici_karta\Templates\FEL.png. File
does not exist.

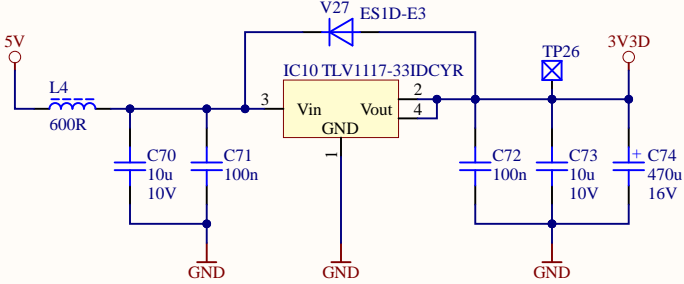
Size: A4	Date: 20.05.2022	Title: Caltal_DP_merici_karta	
Author: Lukas Calta	Subtitle: [SUBTITLE]		Variant: [No Variations]
Checked by: [checked by]	Nr.: [number]		Revision: A1
Approved by: [approved by]	Type: [MPM]		Sheet 8.2 of 21
		File: Current_input.SchDoc	





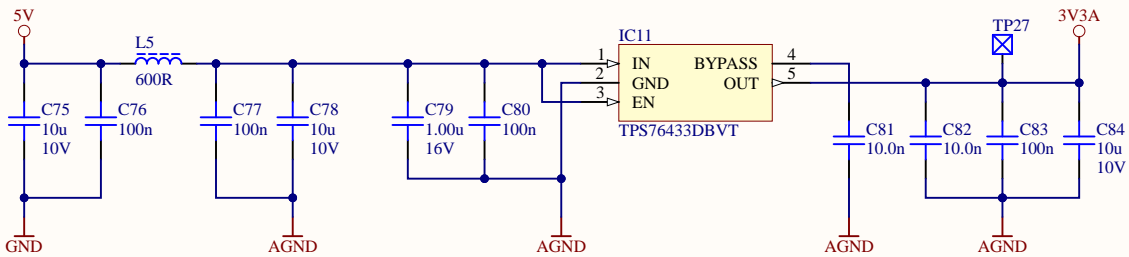
Cannot open file
C:\Users\lcalt\DESKTOP-GNU1GO8\OneD
rive\Plocha\DP_Calta\HW\Altium\Caltal_D
P_merici_karta\Templates\FEL.png. File
does not exist.

Size: A4	Date: 20.05.2022	Title: Caltal_DP_merici_karta	
Author: Lukas Calta	Subtitle: [SUBTITLE]		Variant: [No Variations]
Checked by: [checked by]	Nr.: [number]		Revision: A1
Approved by: [approved by]	Type: [MPM]		Sheet 11 of 21
		File: DC_DC.SchDoc	



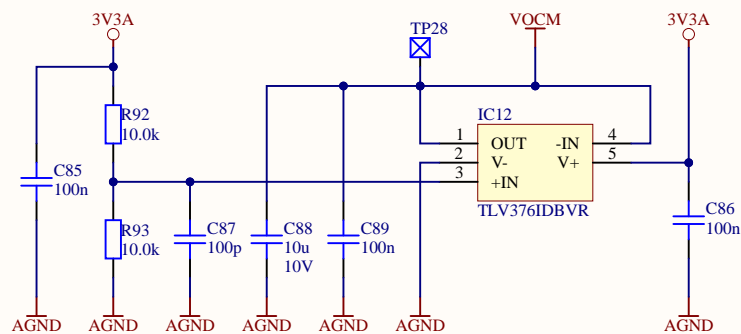
Cannot open file
C:\Users\lcalt.DESKTOP-GNU1GO8\OneDrive\Plocha\DP_Calta\HW\Altium\Caltal_DP_merici_karta\Templates\FEL.png. File does not exist.

Size: A4	Date: 20.05.2022	Title: Caltal_DP_merici_karta	
Author: Lukas Calta	Subtitle: [SUBTITLE]		Variant: [No Variations]
Checked by: [checked by]	Nr.: [number]		Revision: A1
Approved by: [approved by]	Type: [MPM]		Sheet 12 of 21
		File: LDO_3V3D.SchDoc	



Cannot open file
C:\Users\lcalt.DESKTOP-GNU1GO8\OneD
rive\Plocha\DP_Calta\HW\Altium\Caltal_D
P_merici_karta\Templates\FEL.png. File
does not exist.

Size: A4	Date: 20.05.2022	Title: Caltal_DP_merici_karta	
Author: Lukas Calta	Subtitle: [SUBTITLE]		Variant: [No Variations]
Checked by: [checked by]	Nr.: [number]		Revision: A1
Approved by: [approved by]	Type: [MPM]		Sheet 13 of 21
		File: LDO_3V3A.SchDoc	



Cannot open file
C:\Users\lcalt\DESKTOP-GNU1GO8\OneD
rive\Plocha\DP_Calta\HW\Altium\Caltal_D
P_merici_karta\Templates\FEL.png. File
does not exist.

Size: A4	Date: 20.05.2022	Title: Caltal_DP_merici_karta	
Author: Lukas Calta	Subtitle: [SUBTITLE]		Variant: [No Variations]
Checked by: [checked by]	Nr.: [number]		Revision: A1
Approved by: [approved by]	Type: [MPM]		Sheet 14 of 21
		File: CMM_offset.SchDoc	

A

B

C

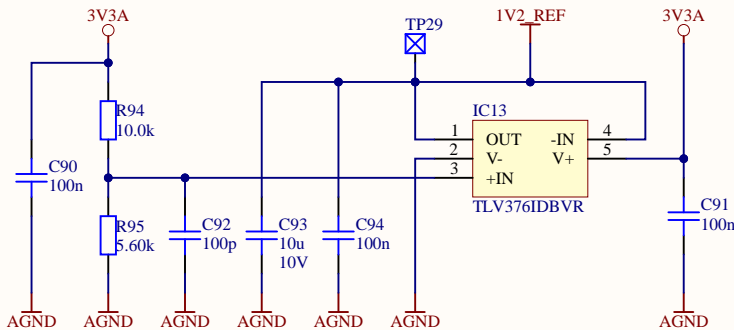
D

A

B

C

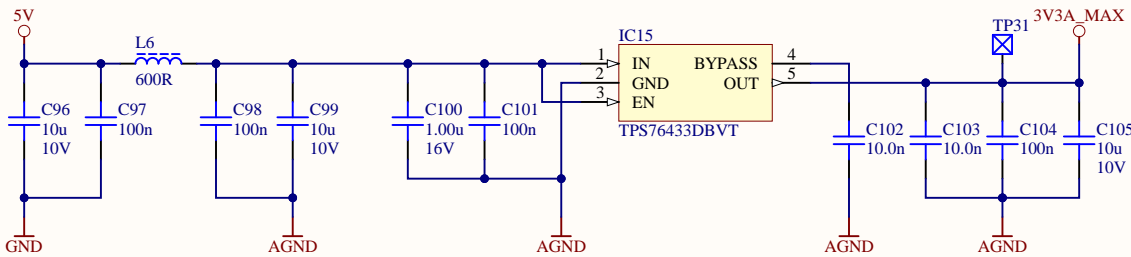
D



Cannot open file
C:\Users\lcalt\DESKTOP-GNU1GO8\OneDrive\Plocha\DP_Calta\HW\Altium\Caltal_DP_merici_karta\Templates\FEL.png. File does not exist.

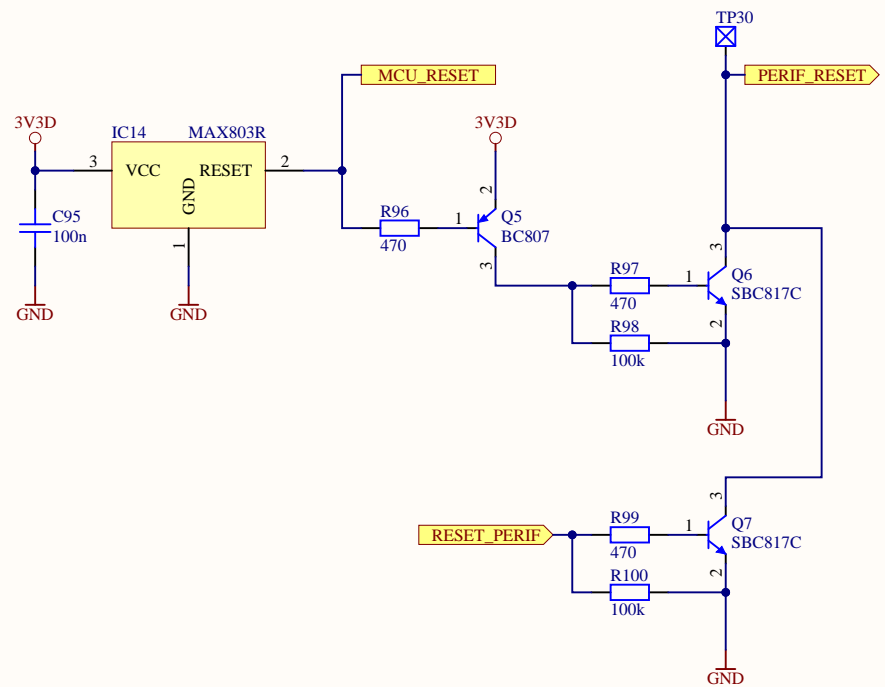
Size: A4	Date: 20.05.2022	Title: Caltal_DP_merici_karta	
Author: Lukas Calta	Subtitle: [SUBTITLE]		Variant: [No Variations]
Checked by: [checked by]	Nr.: [number]		Revision: A1
Approved by: [approved by]	Type: [MPM]		Sheet 15 of 21
		File: Current_REF.SchDoc	

Note: Data in fields enter via project/document parameters.



Cannot open file
C:\Users\lcalt.DESKTOP-GNU1GO8\OneD
rive\Plocha\DP_Calta\HW\Altium\Caltal_D
P_merici_karta\Templates\FEL.png. File
does not exist.

Size: A4	Date: 20.05.2022	Title: Caltal_DP_merici_karta	
Author: Lukas Calta	Subtitle: [SUBTITLE]		Variant: [No Variations]
Checked by: [checked by]	Nr.: [number]		Revision: A1
Approved by: [approved by]	Type: [MPM]		Sheet 16 of 21
		File: LDO_3V3A_MAX31865.SchDoc	



Cannot open file
C:\Users\lcalt\DESKTOP-GNU1GO8\OneDrive\Plocha\DP_Calta\HW\Altium\Caltal_DP_merici_karta\Templates\FEL.png. File does not exist.

Size: A4	Date: 20.05.2022	Title: Caltal_DP_merici_karta	
Author: Lukas Calta	Subtitle: [SUBTITLE]		Variant: [No Variations]
Checked by: [checked by]	Nr.: [number]		Revision: A1
Approved by: [approved by]	Type: [MPM]		Sheet 17 of 21
		File: Reset_IC.SchDoc	

1		2		3		4	
A	<div><div><div><div></div><div></div><div></div></div><div>FID1FID2FID3</div></div></div>						A
B							B
C							C
D			<div><div><div><div>Cannot open file C:\Users\lcalt.DESKTOP-GNU1GO8\OneDrive\Plocha\DP_Calta\HW\Altium\Caltal_DP_merici_karta\Templates\FEL.png. File does not exist.</div><div><div>Size: A4</div><div>Date: 20.05.2022</div><div>Title: Caltal_DP_merici_karta</div></div><div><div>Author: Lukas Calta</div><div>Subtitle:</div><div>Variant: No Variations</div></div><div><div>Checked by: checked by</div><div>Nr.: number</div><div>Revision: A1</div></div><div><div>Approved by: approved by</div><div>Type: MPM</div><div>Sheet 18 of 21</div></div><div><div>File: Mechanical.SchDoc</div></div></div></div><div>Note: Data in fields enter via project/document parameters.</div></div>		D		
1		2		3		4	